

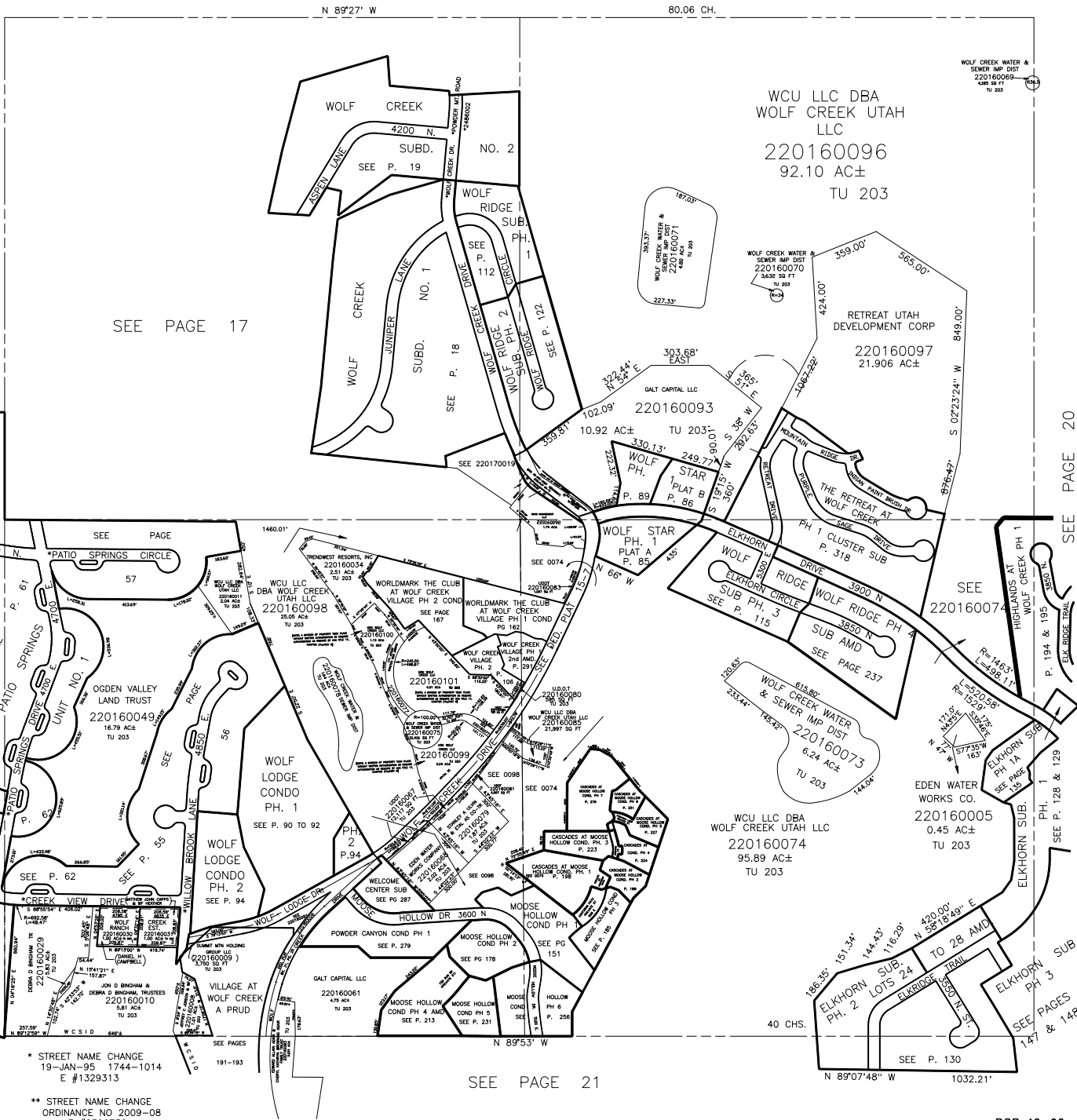
SECTION 22, T.7N., R.1E., S.L.B. & M.

IN WEBER COUNTY

SCALE 1" = 400'

TAXING UNIT: 203

SEE PAGE 6



SEE PAGE 17

SEE PAGE 15

SEE P. 58

SEE P. 59

SEE P. 15

SEE P. 60

SEE P. 61

SEE P. 62

SEE P. 62

SEE P. 218

SEE P. 62

SEE P. 62

SEE P. 62

SEE P. 62

SEE P. 62

SEE P. 62

SEE P. 62

SEE P. 62

SEE P. 62

* STREET NAME CHANGE
 19-JAN-95 1744-1014
 E #1329313

** STREET NAME CHANGE
 ORDINANCE NO 2009-08
 E #2396736

SEE PAGE 21

SEE PAGE 20

SEE PAGE 155

SEE PAGE 128 & 129

SEE PAGES 147 & 148